

Anderson Township Greenspace Access Points



August 2025

Anderson Township Greenspace Rules

Anderson Township Greenspace parcels are protected properties that may not be damaged or altered in any way.

Prohibited activities include cutting of trees or any vegetation, collecting of any natural materials, and dumping of trash or yard cuttings and branches.

Properties are open dawn to dusk.

Vehicles (not limited to the following) are prohibited: motor vehicles, motorized bicycles, allterrain vehicles (ATVs), bicycles (except on designated trails).

The following uses are prohibited: camping, camp/cooking or other fires, hunting (including trapping), fishing, horseback riding, and paintball.

Visit at your own risk and please help us care for these public properties.

If you're someone who likes to get off the beaten path and find your own trail? If so, this guide of popular access points to some of the Anderson Township Greenspace properties is for you.

There are over 70 parcels comprising over 765 acres of Greenspace, and this guide helps to identify some possible locations to best access 14 of these parcels. It identifies select footpaths and old driveways, as well as non-trail exploration access points. Areas cross greenbelts, creekbeds and areas close to neighborhoods and parks. Please keep your distance from adjacent private property lines.

Anderson Township hopes this guide will provide a few new locations to enjoy the great outdoors!

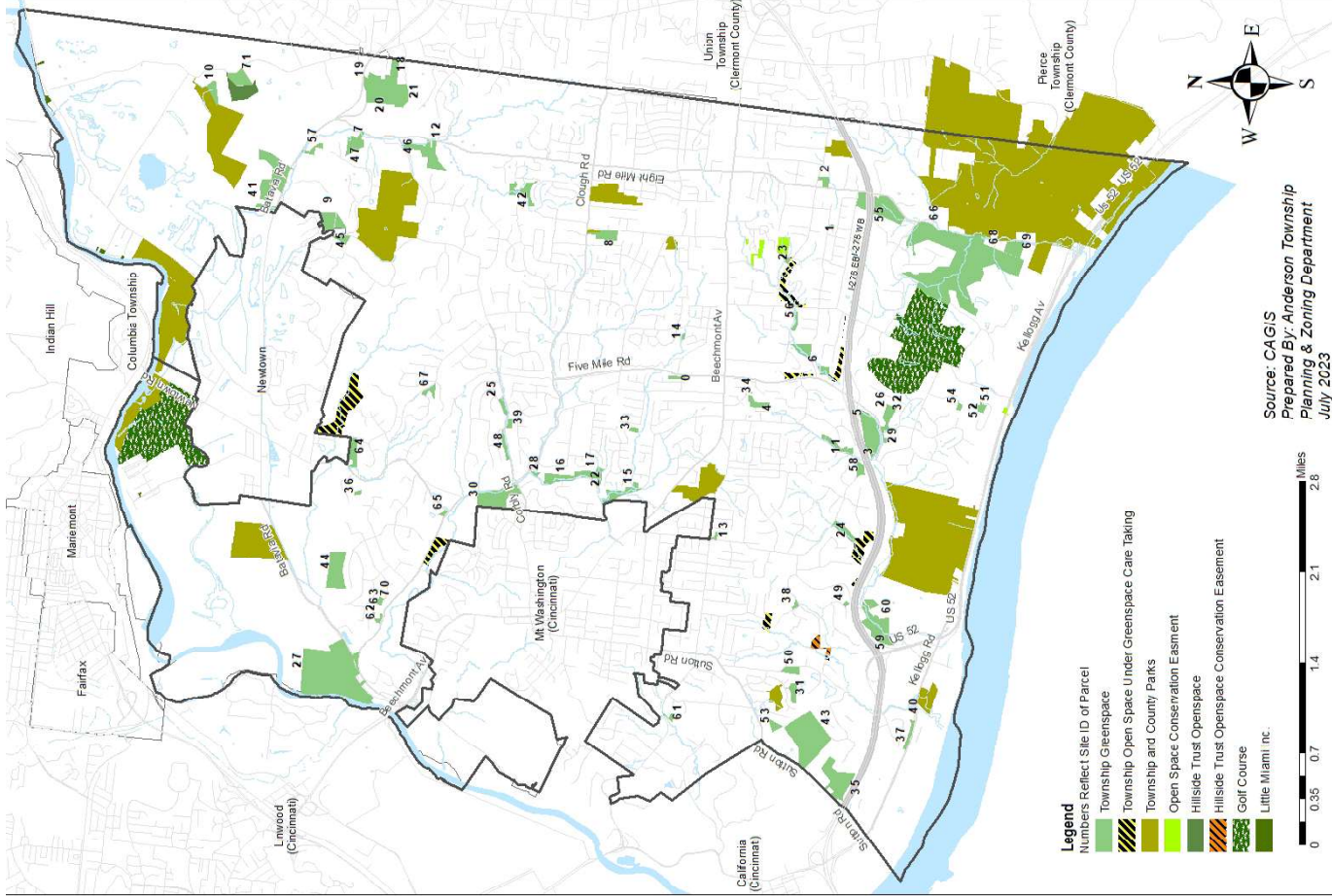


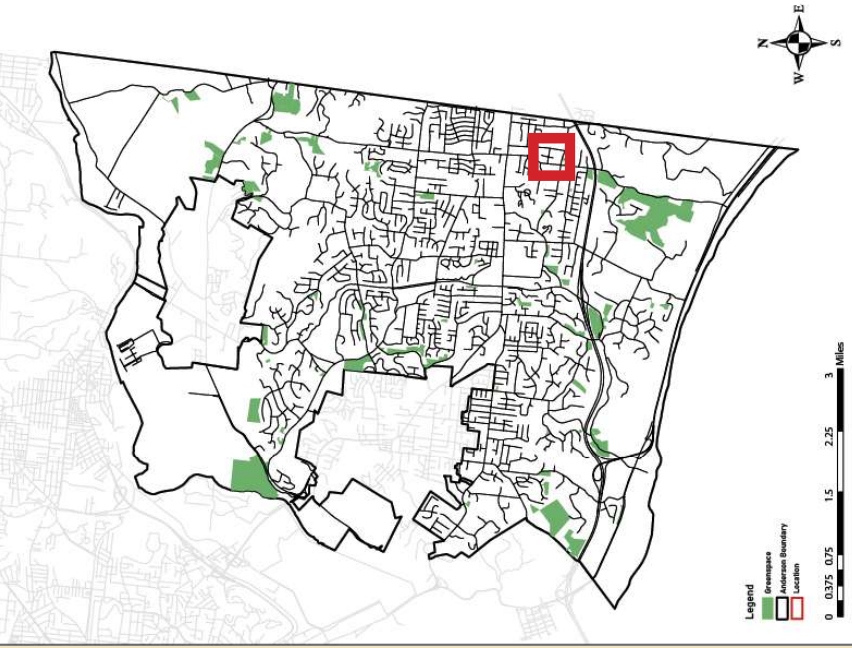
Table of Contents

Footpaths and old driveways

Greenspace Parcel 2 Heritage Center Eight Mile + Forest	1
Greenspace Parcel 24 Bennett.....	2
Greenspace Parcel 42 & Greenbelt to Eight Mile (Part of trail is the creekbed) Forestlake.....	3
Greenspace Parcel 27 St Rt 32 at Clough	4
Greenspace Parcel 43 Wyndwatch	5

Non-trail exploration access points

Greenspace Parcel 6 Old Five Mile	6
Greenspace Parcels 4 & 34 Stratford Hill Dr.....	7
Greenspace Parcel 64 adjacent Moundview Park	8
Greenspace Parcel 3+5 Rollins Lane.....	9
Greenspace Parcel 8 corner Nagel + Clough.....	10
Greenspace Parcel 55 Eight Mile (at 275).....	11
Greenspace Parcels 66,68 & 69 Eight Mile (Hopper to US 52)	12
Greenspace Parcel 35 Sutton	13
Greenspace Parcel 71 3763 Mt. Carmel Rd	14



Anderson Township Greenspace Parcel 2 Access Point

Access via Heritage Center on the
corner of Eight Mile and Forest Rd
Footpath

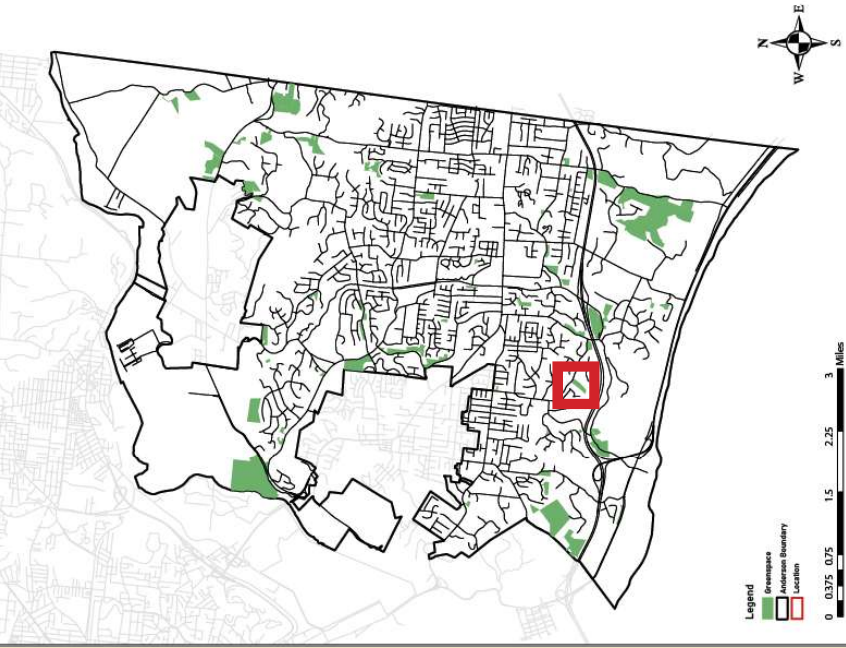


Legend

Greenspace

Access Point

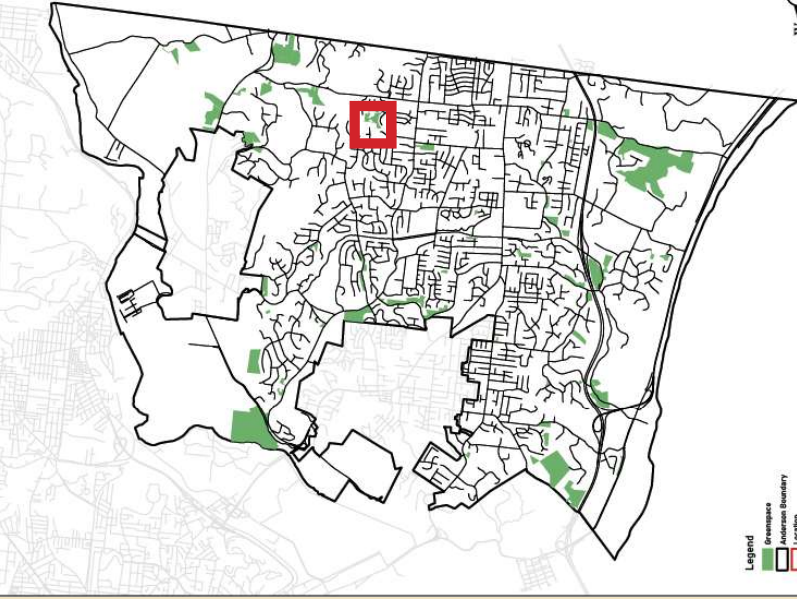




Anderson Township Greenspace Parcel 24 Access Point

South side Bennett Rd between Birney
and Dunwoodie
Park on gravel/grass pull out
old drive/Footpath





Legend
 Greenspace
 Anderson Boundary
 Location



Legend

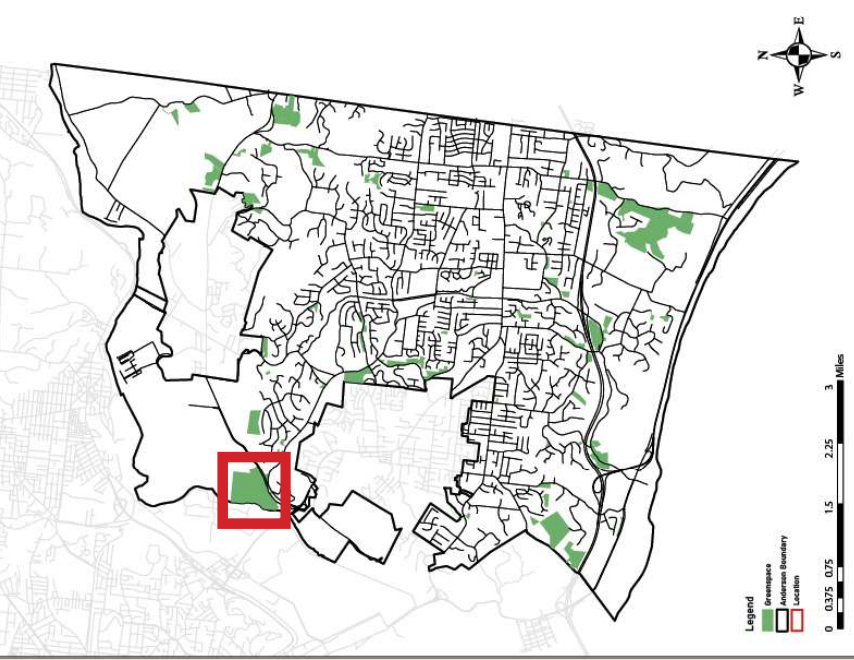
Greenspace

Access Point

Anderson Township Greenspace Parcel 42 & Greenbelt to Eight Mile Access Point

North End of Forestlake
 Park on street
 Footpath and creekbed





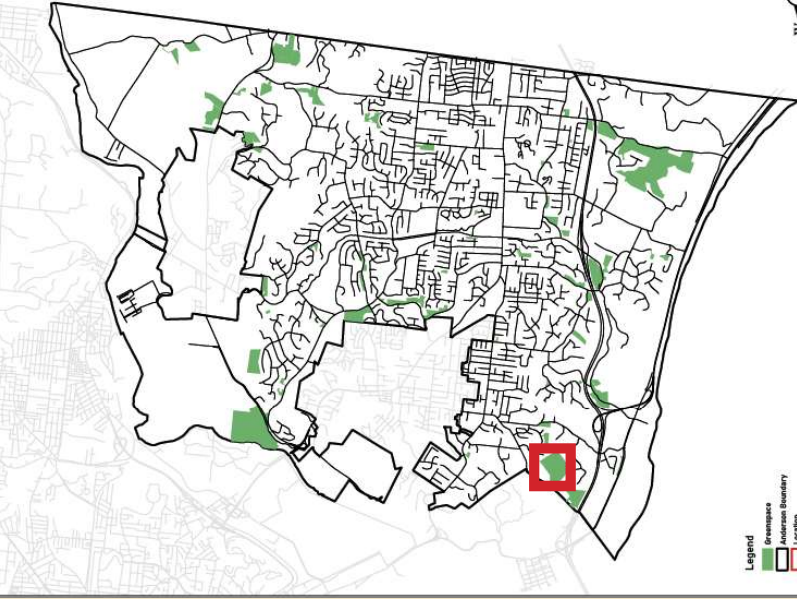
Legend

Greenspace

Access Point

Anderson Township
Greenspace Parcel 27
Access Point
 North Side of State Route 32 (Batavia Pike)
 700' East of
 Clough & 32 Intersection
 Also accessible via Little Miami Trail
 Old driveway





Legend
 Greenspace
 Anderson Boundary
 Location



Legend

Greenspace

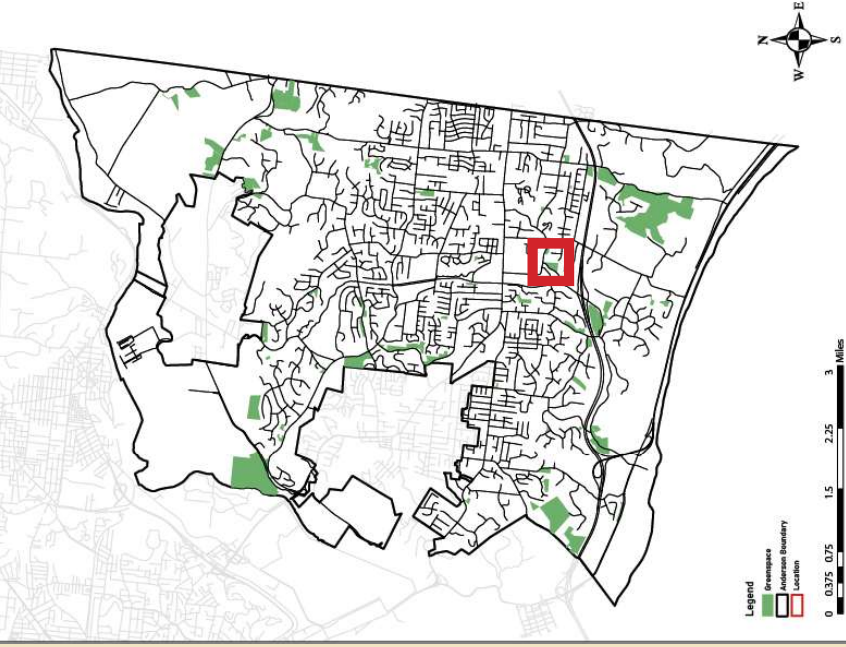
Access Point



Anderson Township Greenspace Parcel 43 Access Point

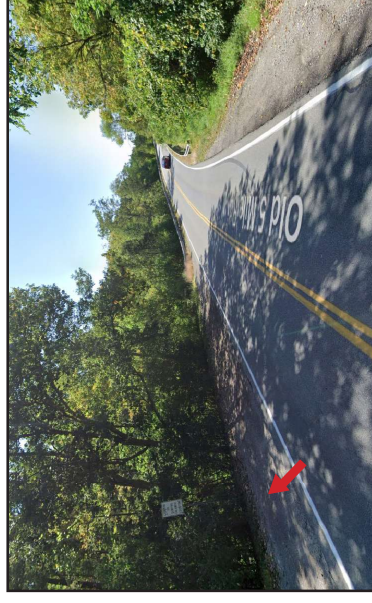
End of Wyndwatch Drive
 Park on street
 Old Driveway

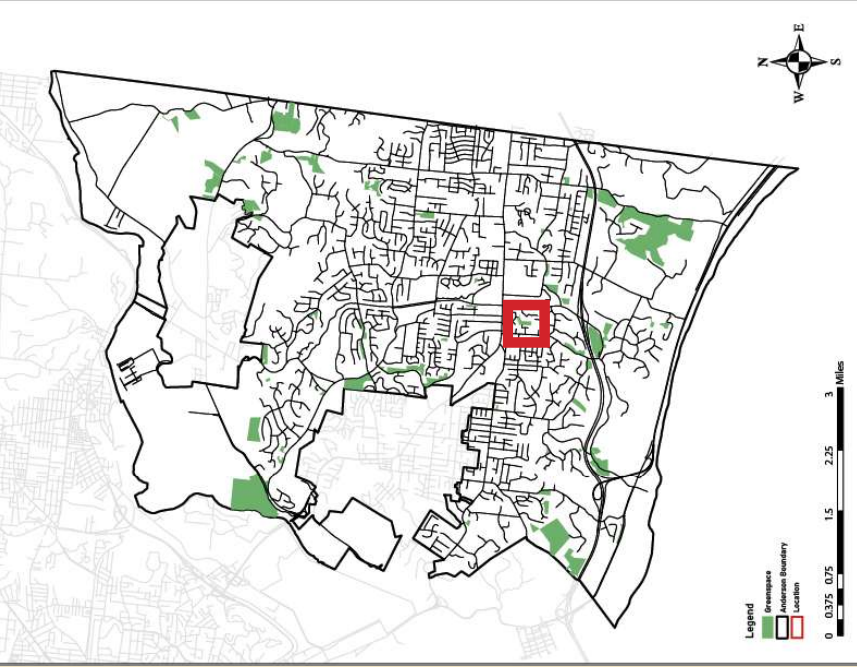




Anderson Township Greenspace Parcel 6 Access Point

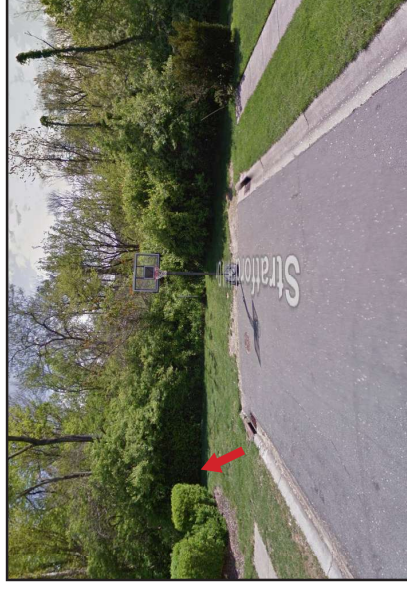
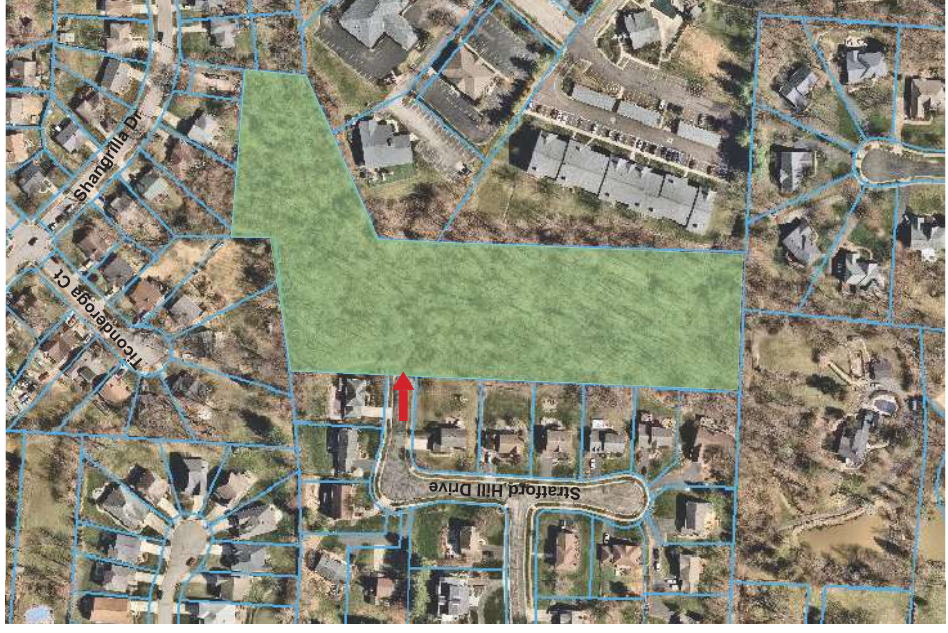
East side of Old Five Mile Rd
Between Forest Rd & Five Mile Rd
Non-trail exploration

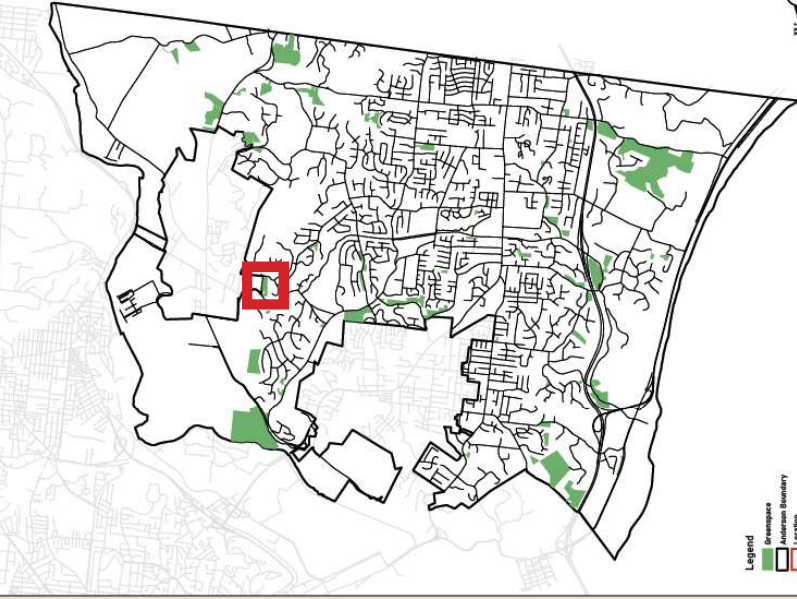




Anderson Township Greenspace Parcels 4 & 34 Access Point

End of Stratford Hill Drive
Park on street
Non-trail exploration





Legend
 Greenspace
 Anderson Boundary
 Location



Legend

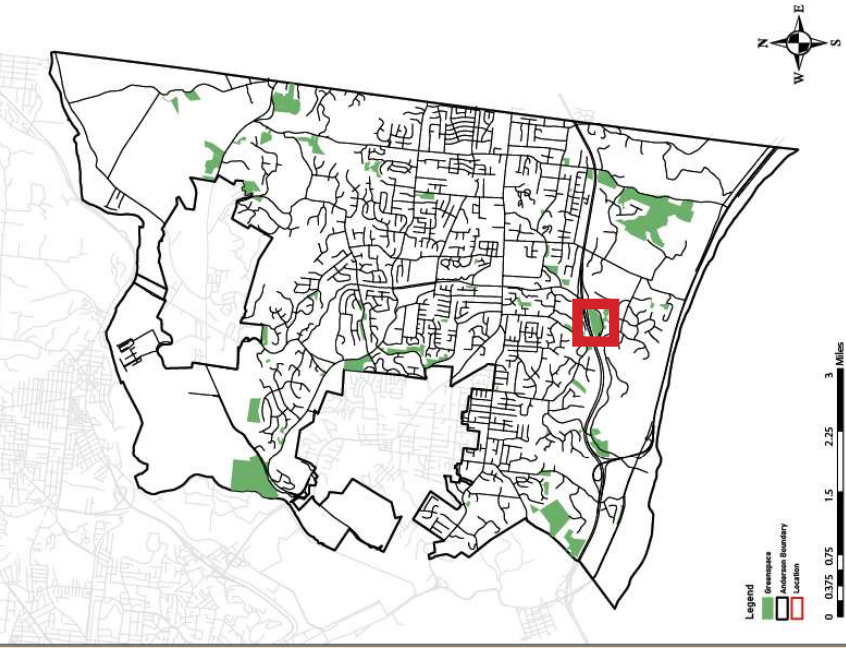
Greenspace

Access Point

**Anderson Township
 Greenspace Parcel 64
 Access Point**

Newtown Rd.
 Park at Moundview Park access behind
 south shelter
 Non-trail exploration



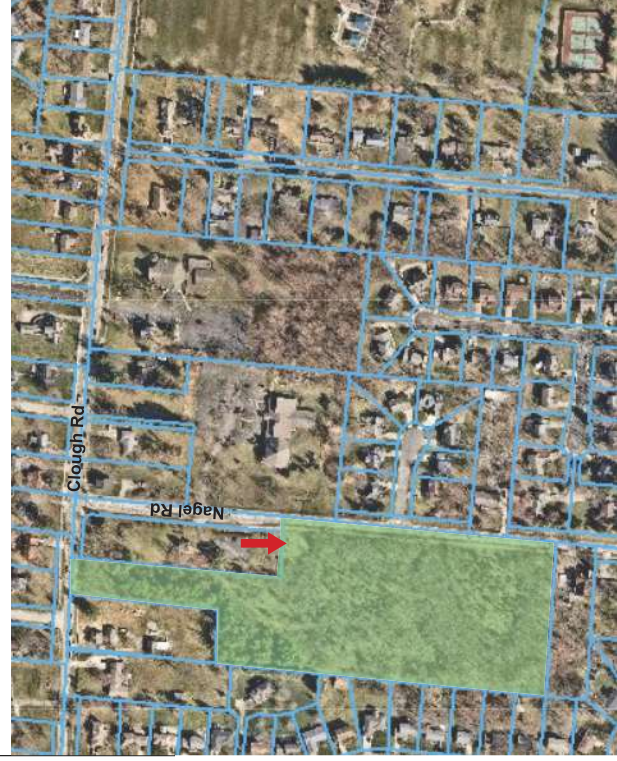
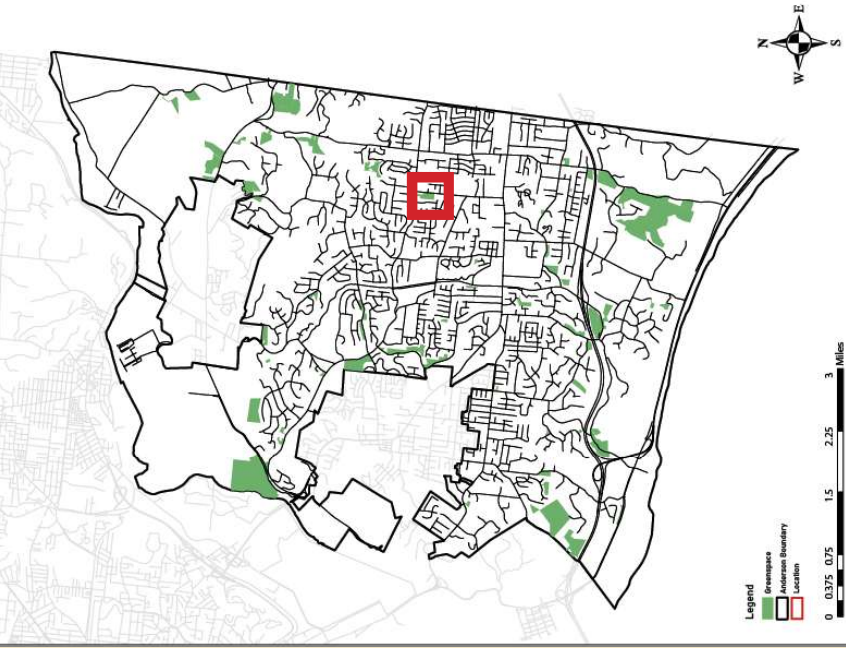


Anderson Township Greenspace Parcel 3+5 Access Point

Off Five Mile near Markley Rd
Gravel Parking lot at end of Rollins Ln
Non-trail exploration

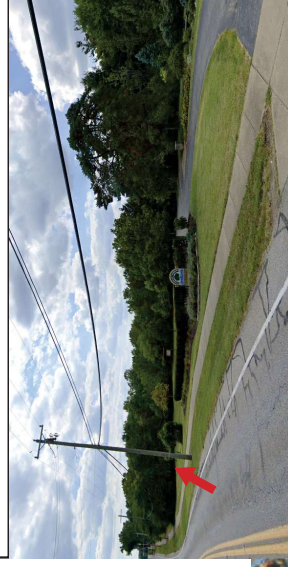


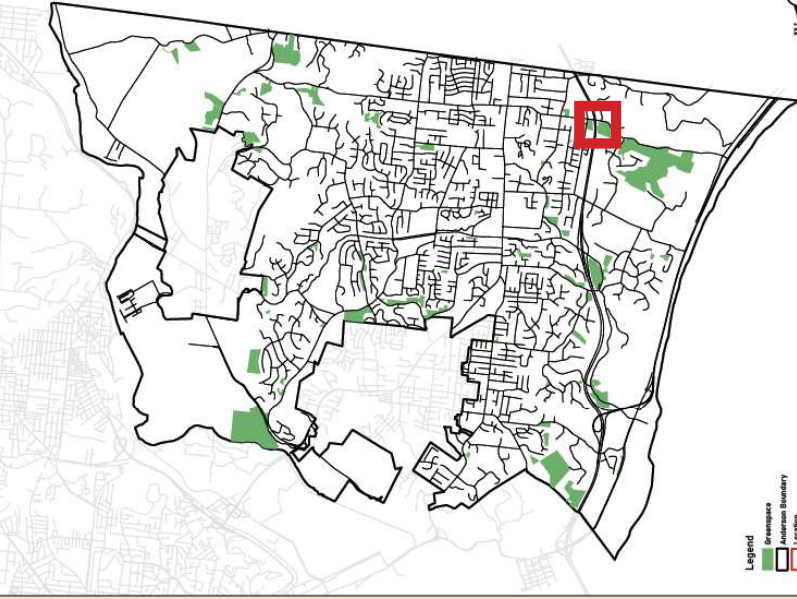
Anderson Township Greenspace Access Points, August 2025



Anderson Township Greenspace Parcel 8 Access Point

North end of Nagel Road
Parking at Bicentennial Park
Non-trail exploration





Legend
 Greenspace
 Anderson Boundary
 Location



Legend

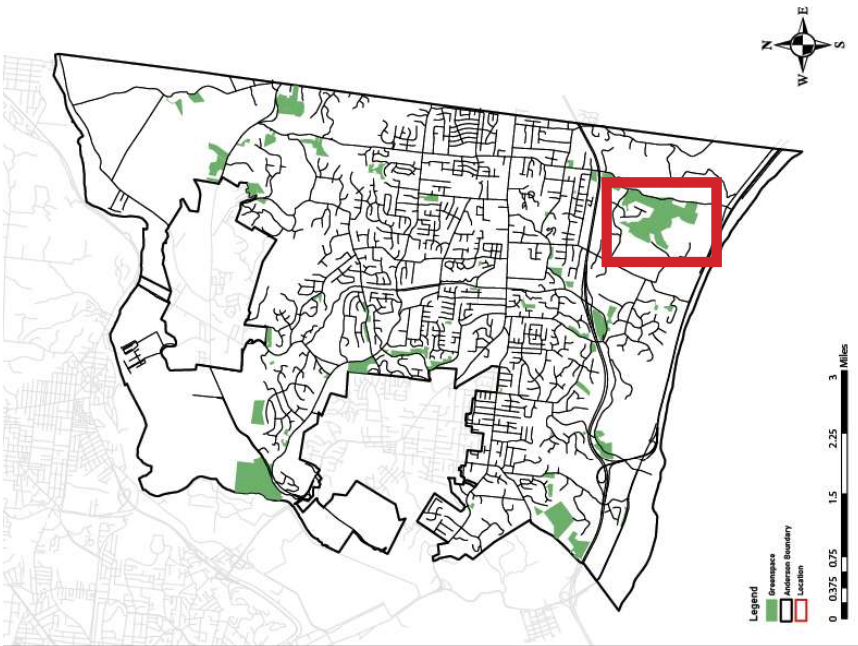
 Greenspace

 Access Point

Anderson Township Greenspace Parcel 55 Access Point

West side of 8 Mile just South of I-275
 Park on gravel pull out
 Non-trail exploration





Anderson Township Greenspace Parcels 66,68 & 69 Access Point

West side of Eight Mile between Hopper Rd and Old Kellogg Rd
Non-trail exploration

Northern Entrance
Park on Greenspace side
(west side)

Southern Entrance
Park across the road on bridge
(east side)



Northern Entrance



Southern Entrance

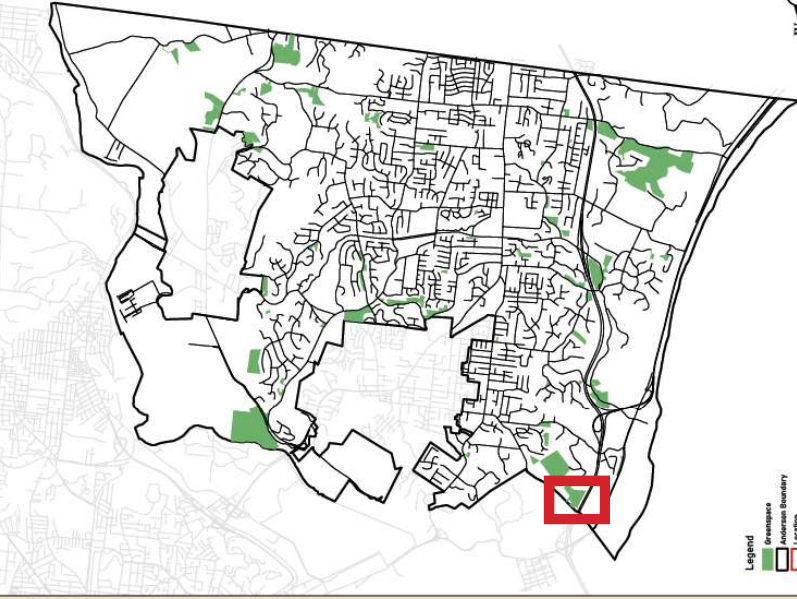
Legend

Greenspace



Access Point





Legend
 Greenspace
 Anderson Boundary
 Location



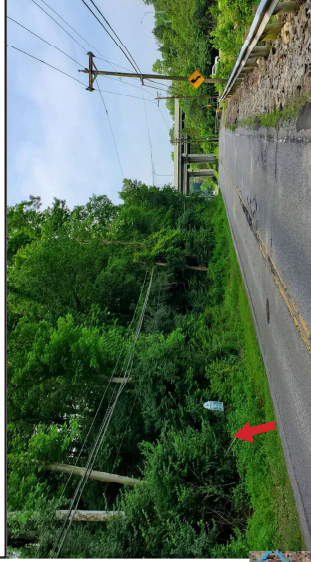
Legend

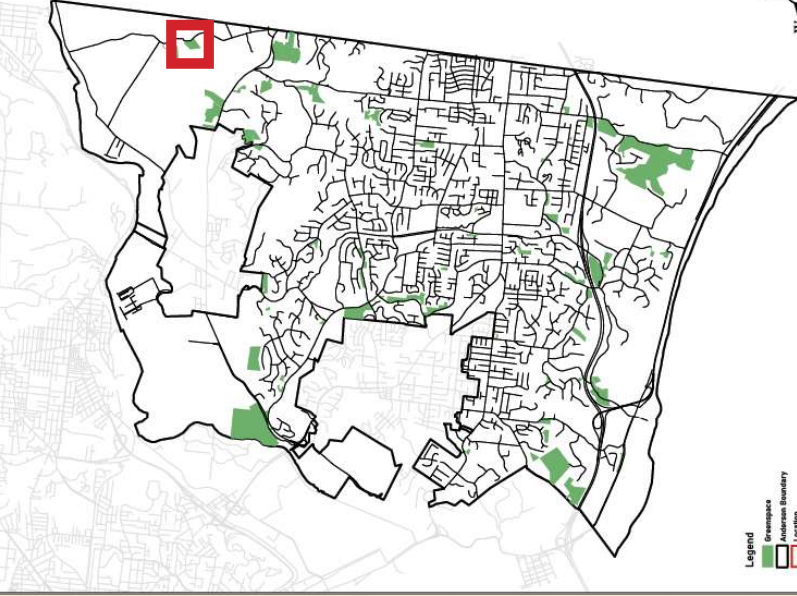
Greenspace

Access Point

Anderson Township Greenspace Parcel 35 Access Point

Park on 2 Mile Road West of Sutton
 Non-trail exploration
 Walk across Sutton. Opening into
 woods left of Greenspace sign.





Legend
 Greenspace
 Anderson Boundary
 Location



Legend

Greenspace

Access Point

**Anderson Township
 Greenspace Parcel 71
 Access Point
 3763 Mt Carmel Rd
 Non-trail exploration**

